



Effective

HIGH SCHOOL COMMUNICATIONS

PA Matthews Audio
Since 1991

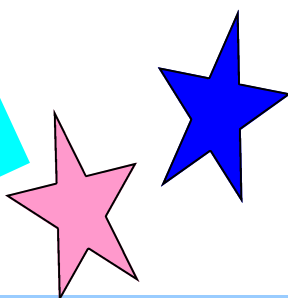


HIGH SCHOOL PA, BELL AND MUSIC SYSTEM

NOW INSTALLED IN OVER 60 NSW HIGH SCHOOLS !!

- **Instant communication between office and your entire school**
- Full voice paging across *all rooms, common and outside areas*
- Separate Evacuation, Lockdown and Lockout voice announcements
- Easy to isolate blocks and areas for exams or silence
- Wet Weather and Auxiliary messages included
- Bell times stored and updated easily via any web browser
- Upload your Line up Music—round up those kids after breaks!
- **All your class period bells and messages heard everywhere!**
- Super reliable long life technology used—10 ~20 year life span
- Ultra safe, low voltage cabling and equipment—easy to extend
- *Fully Installed by our professional, licensed trades staff with 12 month warranty*

★ Typical ex GST Prices FULLY INSTALLED



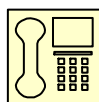
Suburban—30 Room School ~\$29,000
 Major—50 Room School ~\$33,000
 City—80+ Room School ~\$43,000

(higher for regional areas)

SERVICING NSW STATE WIDE
(please refer web site for conditions)



All Equipment fits in a compact 6RU Rack cabinet
System powerful enough for ANY SIZE school!



(02) 4576 5571

www.pamatthewsaudio.com.au

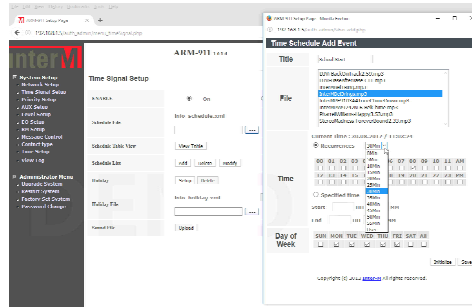
How It Works:

Zone Paging Mic Uses standard Cat 5 Connection.

Up to FOUR Mics can be connected

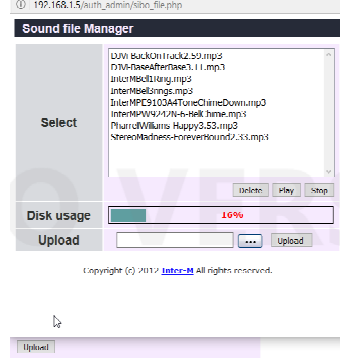


Any computer with a Browser Anywhere in the school

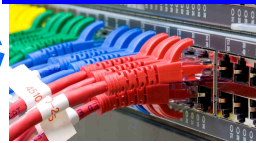


Schedule Bell Times

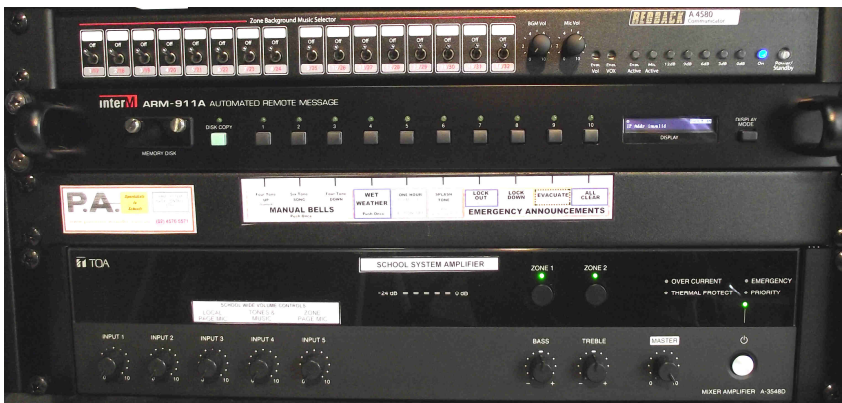
Upload MP3 Line Up Music



School Data Network



ARM911 Controller Unit



Powerful PA Amplifier and 16 Zone Controller

Multi Pair Cabling Through School

Outdoor areas & fields



Corridors & Common Areas



Class rooms & teaching Areas



Frequently Asked Questions

Will the installation interrupt our existing data or telephone cabling?

No. The system forms a **totally separate and permanent cabling system**. The data network connection is *only used for programming the system*. You can even disconnect the blue cable entirely and the system will continue to work!

Will the installation result in ugly cables and surface wiring around the school?

Surface wiring is kept to an absolute minimum. In 90% of runs, our cables are drawn into existing conduits alongside data cables, in spare conduits or old PA or MATV conduits between blocks. In some rare cases, neat and professionally installed aerial cabling may be required. Aerial cables are also generally used to serve portables as these are then easily taken away or changed when the portable is removed. These look similar to aerial cabling normally used by Telstra for telephone wires.

Can I silence the bell in sections of the school for exams?

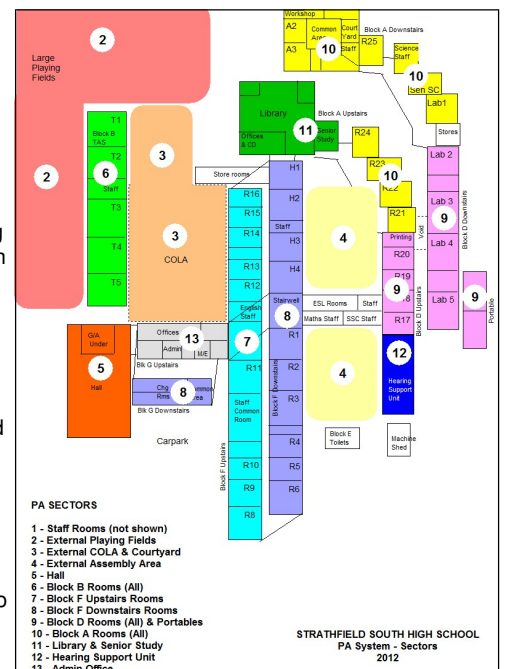
Yes. Although individual rooms cannot normally be isolated, each block or floor is generally wired as a separate sector. This can easily be isolated using the controls on the zone unit. Emergency tones override the isolation and it is still possible to page in to isolated zones.

What sort of life span can the school expect from the system?

Because the system does not rely on computer or PC technology, you can expect to get a minimum of Ten (10) years of uninterrupted service from the system with only minor maintenance. Speakers and Handsets can be expected to last around 20 years with cabling up to 50 years or more.

Is the system easy to use?

The system is designed specifically around the needs (and ability) of school staff. A full instruction manual is included with every installation and are also available on our web site.



Full Zone plans and instructions included With every installation